

**W.steps**



# COMBI Line

The all-in-one stepladder, leaning ladder, and A-frame ladder.

Made in Sweden 

# Ergonomic and safe

Our COMBI Line is exactly what it sounds like: a stepladder that fully extends for maximum working height that can also be configured as an A-frame ladder or leaning ladder. It's ideal for those who need a multipurpose ladder for a wide range of applications.

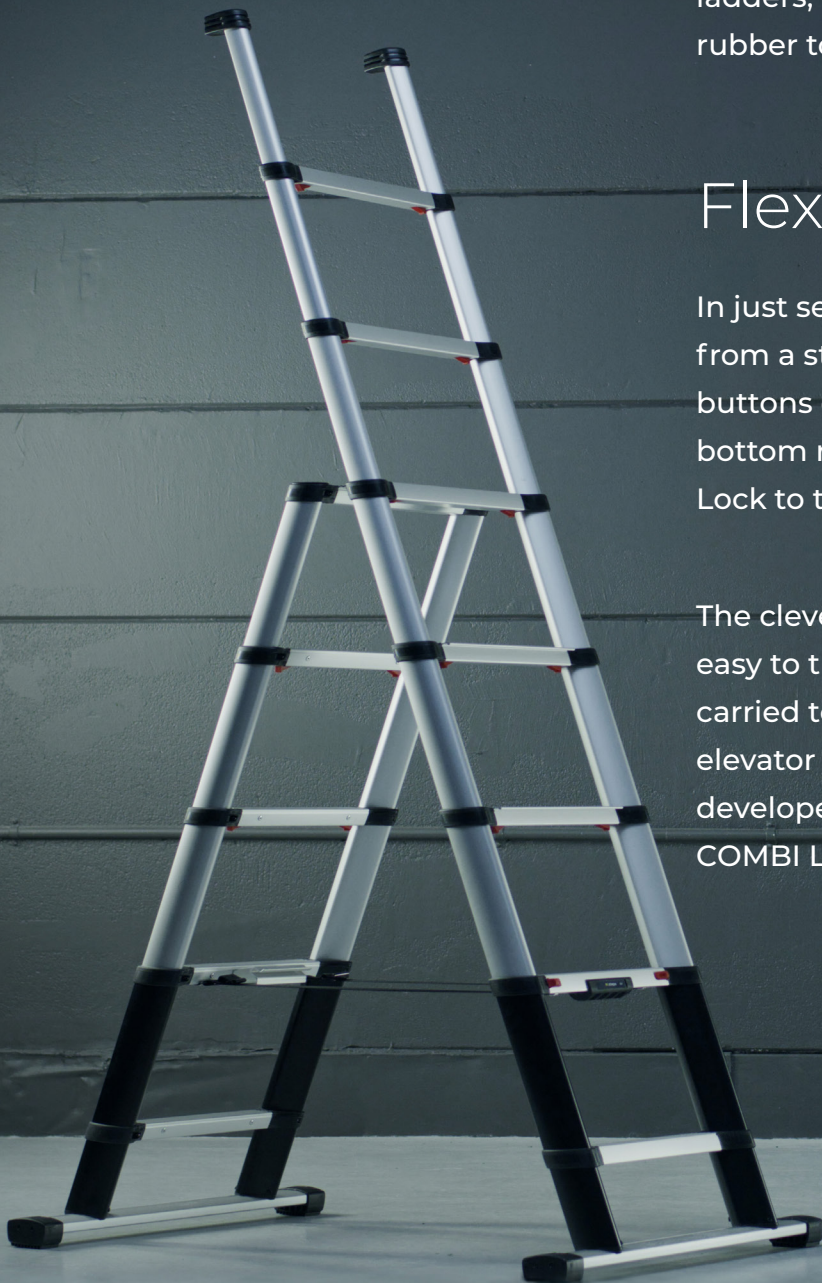
Ladder safety is our highest priority, and that's why we built in superior safety features. Red indicator tabs clearly show when rungs are locked and safe to climb. Our 3.15" deep and precisely level rungs have grooved channels that provide great grip and are comfortable to stand on for long periods of time.

The patented triangular tube shape makes our COMBI Line ladders strong and flex resistant. The shape also allows for a secure hand grip when climbing up and down the ladder. Like all of our ladders, the COMBI Line is equipped with both rubber tops and feet, all to provide unrivaled stability.

## Flexible and Easy to Use

In just seconds you can transform the COMBI ladder from a stepladder into a leaning ladder. Just push the buttons on the back of the ladder and pull the bottom rungs upward until you can attach our Easy Lock to the above rung. Done!

The clever design of telescopic ladders makes them easy to transport. It also allows for them to be easily carried to a worksite, even when you need to use an elevator or if there is limited space. The newly developed Autolift makes it even easier to carry COMBI Line ladders.



# Your safety is our top priority

Safety is essential when working on a ladder, and safety is our main focus when we're creating ours. That's why we've incorporated smart features like Autolift, grooved rungs, the Slow-Close System, and the Autostep® Automatic Locking System.

All of our telescopic ladders have triangular tubes, which is a patented design that makes them twist and flex resistant.

Our COMBI ladders come equipped with stabilizer bars that provide additional points of ground contact for enhanced safety.

W.steps will never compromise on safety. Our products are tested by accredited third-party testing agencies around the globe in order to ensure unrivaled safety, outstanding functionality, and the highest quality. Our ladders are certified according to ANSI, EN 131, SP, and more.

Our dedicated factory team in Sweden pays attention to every detail during the manufacturing process so that each industrial ladder we build lives up to our premium quality and safety standards.

We let you focus on the job, not on the safety of your ladder.



# Small details make a big difference.

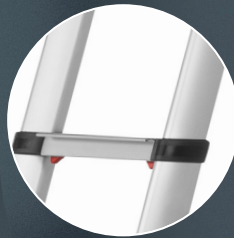
**Safe Locking**  
Red indicator tabs provide visual confirmation and ensure safety.



**Ergonomic Design**  
Wide and precisely level rungs minimize slipping and reduce fatigue.



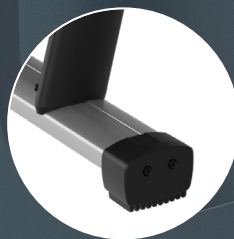
**Safer Rungs**  
Grooved channels disperse dirt and ensure secure footing.

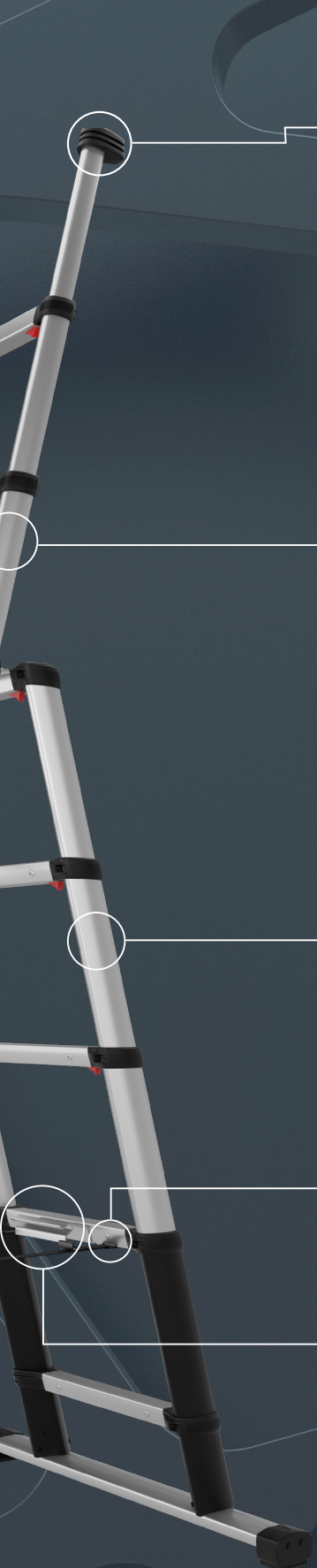


**Integrated Handle**  
An integrated handle makes the ladder very easy to carry.



**Rubber Feet**  
Maximum surface contact ensures secure footing and added safety.





**Rubber Top**  
Works on uneven surfaces, avoids sliding, and prevents wall damage.



**Strong Triangular Design**  
Patented design is twist and flex resistant. U.S. Patent No. Des. US D683,479 S.



**Slow Close System**  
Controlled closing prevents finger pinching.



**Easy Lock**  
Transforms quickly from a standing ladder to a leaning ladder.



**Autolift**  
Connects the front and back of the ladder for easy lifting.



**Smart & Safe Unlocking**  
The Autostep® Automatic Locking System features two push buttons for easy unlocking when retracting the ladder.



# Choose the right one

Our COMBI Line is available in two different sizes.



COMBI 7.5 FT  
**72423-685**

- ANSI Type 1A Certified
- Load capacity: 330 lbs



COMBI 9.5 FT  
**72430-685**

- ANSI Type 1A Certified
- Load capacity: 330 lbs

Mfg. no.	Model	No. of rungs	Rung width	Working height	Height (Extended)	Height (Closed)	Width	Weight
72423-685	COMBI 7.5 FT	7	3.15"	10' 2"	7' 6"	29"	27"	31.1 lbs
72430-685	COMBI 9.5 FT	9	3.15"	12' 5"	9' 6"	31"	29.5"	43 lbs



# Accessories

Make your W.steps telescopic ladder even better with accessories that enhance both convenience and safety.



## Tool Tray

Keep tools and equipment well within reach. (Snap-Fit , 11.8" x 3.2" x 3.4")

Mfg. no.	Model	Compatible with
9202-105	TOOL TRAY	PRIME and COMBI Line



## Wall Mount

Save storage space and stay organized.

Mfg. no.	Model	Compatible with
9195-605	WALL MOUNT	COMBI Line



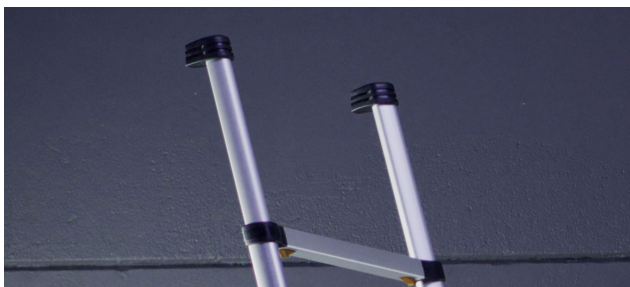
Scan for details.



## Rubber Feet (Spare Parts)

Maximum surface contact ensures secure footing and added safety.

Mfg. no.	Model	Compatible with
9222-105	RUBBER FEET	COMBI Line



## Rubber Tops (Spare Parts)

Work on uneven surfaces, avoid sliding, and prevent wall damage.

Mfg. no.	Model	Compatible with
9567-505	RUBBER TOPS	COMBI Line



Scan QR code to watch  
full COMBI Line video.

**w.steps**

info@hultaforsgroup.us | 262-242-1161 | www.wsteps.us  
6333 West Donges Bay Road, Mequon, WI 53092



Part #: WSC.01.2025